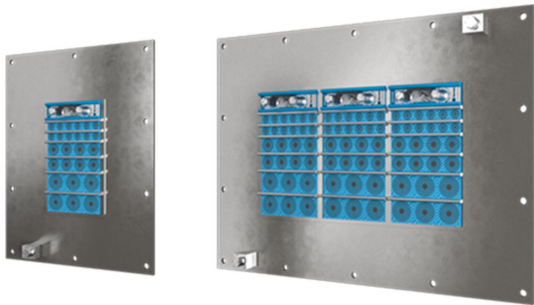




# Roxtec GH BG™ FL100 transit

Transit with wide flange and earthing terminal, for bolting onto uneven structures.

The Roxtec GH BG™ FL100 is a cable and pipe seal for bonding and grounding applications. The rectangular steel frame with the wide flange ensures a tight seal when bolted onto concrete or brick walls/floors. The seal allows for high cable and pipe packing density. The transit can be used with a GE extension frame in galvanized steel to cover the depth of a thick wall. Roxtec EC (electrical continuity) test sticks are available to help indicate the electrical performance of the transit installation.



- Easy to maintain and inspect
- Provides built-in spare capacity

### Product characteristics



Fire rated



IP/UL NEMA



Electrical safety

### Structure of installation



Concrete



Brick

### Mounting type



Bolting

## Ratings & certificates

### Fire

- E/EI rating according to EN 13501
- F/T rating according to UL 1479

### Tightness

- IP 66/67

### Supports

- Bonding and grounding

## Frame dimensions

mm/kg

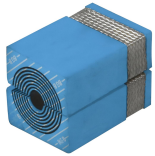
The frame variants below are a limited selection. For the full range of frames and configurations, please visit [roxtec.com](https://www.roxtec.com).

Product	Frame openings	Packing space	External dimensions WxHxD	Aperture dimensions w x h	Weight	Art. no
GH BG 6x1 FL100 GALV	1	120 x 180	332.5 x 430 x 93	148(+5/-5) x 245(+5/-5)	8	122388
GH BG 6x2 FL100 GALV	2	120 x 180	463 x 430 x 93	278(+5/-5) x 245(+5/-5)	9.3	122389
GH BG 6x3 FL100 GALV	3	120 x 180	593.5 x 430 x 93	409(+5/-5) x 245(+5/-5)	12.6	122390
GH BG 6x1 FL100 AISI316	1	120 x 180	332.5 x 430 x 93	148(+5/-5) x 245(+5/-5)	8	122264
GH BG 6x2 FL100 AISI316	2	120 x 180	463 x 430 x 93	278(+5/-5) x 245(+5/-5)	9.4	122265
GH BG 6x3 FL100 AISI316	3	120 x 180	593.5 x 430 x 93	409(+5/-5) x 245(+5/-5)	12.8	122266



# Sealing components

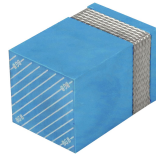
## Sealing components



RM BG™ module with Multidiameter™



Lubricant



RM BG™ solid compensation module



Wedge & Wedgekit



Stayplate



BG™ sealing kit

## Accessories



GE extension frame



Accessories ES and BG



Holder tools

For detailed information, please visit [roxtec.com](https://www.roxtec.com).

The product information provided by Roxtec does not release the purchaser of the Roxtec system, or part thereof, from the obligation to independently determine the suitability of the products for the intended process, installation and/or use.

Roxtec gives no guarantee for the Roxtec system or any part thereof and assumes no liability for any loss or damage whatsoever, whether direct, indirect, consequential, loss of profit or otherwise, occurred or caused by the Roxtec systems or installations containing components not manufactured by an authorized manufacturer and/or occurred or caused by the use of the Roxtec system in a manner or for an application other than for which the Roxtec system was designed or intended.

Roxtec expressly excludes any implied warranties of merchantability and fitness for a particular purpose and all other express or implied representations and warranties provided by statute or common law. User determines suitability of the Roxtec system for intended use and assumes all risk and liability in connection therewith. In no event shall Roxtec be liable for indirect, consequential, punitive, special, exemplary or incidental damages or losses.

The Roxtec products are offered and sold in accordance with the conditions of the Roxtec General Terms of Sales. The latest version of the Roxtec General Terms of Sales can be downloaded from <https://www.roxtec.com/en/about-us/about-roxtec/general-terms-of-sales/>

We reserve the right to make changes to the product and technical information without further notice. Any errors in print or entry are no claims for indemnity. The content of this publication is the property of Roxtec International AB and is protected by copyright.

This document was generated on: 2024-04-29